

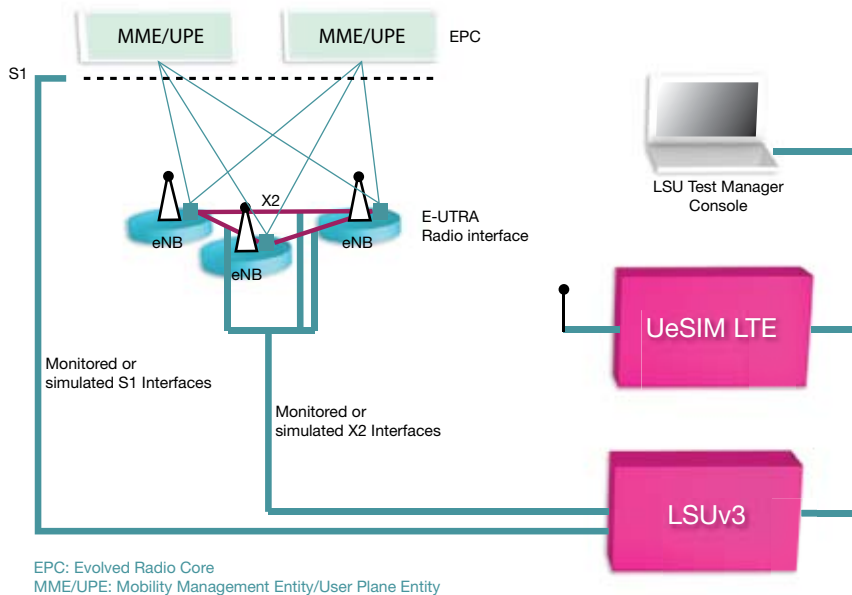
LSU UeSIM LTE

multi-UE simulation over radio interface with a single device



The new testing challenge for LTE

LTE (Long Term Evolution) the new 3GPP standard for broadband mobility disrupt the existing paradigms of cellular network testing. In fact, in order to increase overall performances, in addition to high-spectral efficiency radio techniques, LTE benefits also from a very simplified architecture in comparison to UMTS and GSM. Evolved Node-B's (eNB) are the edge between radio and All-IP core networks. This leads to the impossibility to monitor and test the equivalents of intermediate links such as lu-b/cs in UMTS. The result is: an effective testing of LTE network elements must involve radio interface. This is exactly the challenge addressed by the Prisma's LSU UeSIM LTE.



LSU simulation of a complete LTE network

a powerful and flexible FPGA-DSP architecture which allows tailored solutions for any testing need from small to large test beds. A single device -capable to load up to 8 sectors 2x2 MIMO- is manageable via centralized GUI. UeSIM radio modules comply with Type I, XIII and IV specifications.



Integrated monitoring, simulation via a scripting environment

Prisma provides also an unrivalled set of ready-to-use test scripts that can be run right out of the box, enabling the tester to execute even complex testing plans without needing to create special scripts. Very specific tasks such as test automation or simulation of protocol violations (at different layers) and fine grain reporting are possible.



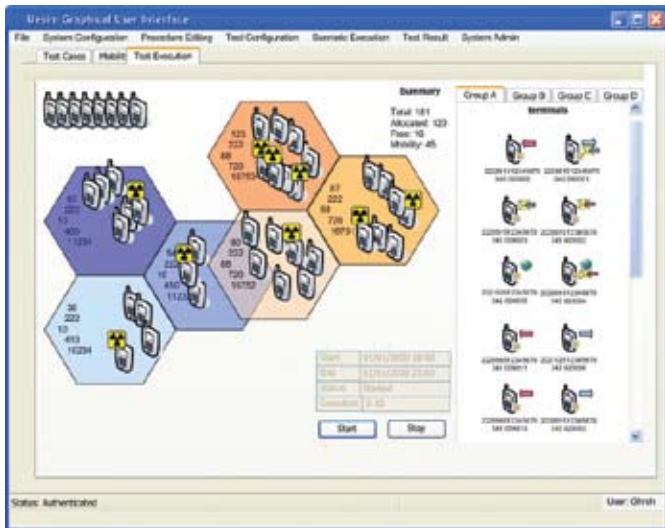
Full load of one or multiple LTE sectors, GSM-LTE Inter-RAT procedures testing

The LSU UeSIM LTE is the complete solution for all your LTE testing needs. A single hardware platform can simulate up to 1024 Ue's per sector. Load&Stress and functional testing over radio interface encompass complete LTE protocol stacks and their applications. UeSIM LTE allow to stress and monitor both the air interface and the core network. Possible carrier bandwidth are 5, 10 and 20 MHz and an optional 2x2 MIMO setup. Radio modules can optionally embed OBSAI/CPRI interfaces. LSU UeSIM LTE is able to test GSM-LTE Inter-RAT procedures.



Flexible hardware configurations to load multiple LTE sectors in a single device

LSU MsSIM LTE configuration is modular and easily scalable. Radio modules are based on



LTE network scenario configuration with UeSIM Graphical User Interface

User friendly test manager software included

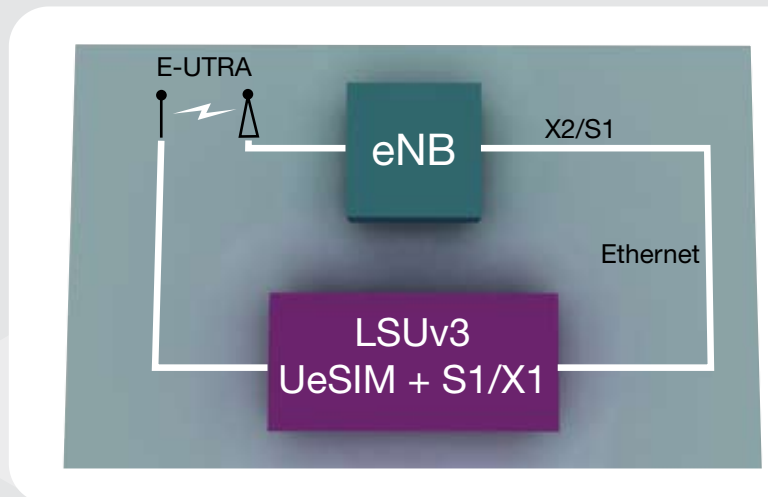
PRISMA has leveraged more than a decade of load & stress testing experience in the cellular wireless industry to create the industry's most flexible and easy-to-use management software. Two user test tools – the LTE Test Manager (primarily for LTE equipment Vendors) and the Quick GUI (primarily for LTE network Operators) – are available, the Quick GUI providing pass/fail type testing scenarios with the Test Manager allowing for more complex analysis.

Test over radio interface completed by S1/X2 simulation solution

LSU UeSIM LTE can be part of a complete testing and monitoring if integrated with other Prisma's card interfaces and software modules. In fact, simulation over radio interface can be complemented by that over S1/X2 obtaining a complete end to end testing for eNB network elements.

Multi standard hardware platform

LSU UeSIM LTE is part of the LSU SDR Family designed by Prisma to test radio interfaces from different standards using common hardware and a modular software architecture. This approach will ensure an unrivaled protection of your investment for testing equipments simply because Prisma's solution will smartly follow your needs as they evolve and grow. LSU SDR hardware and software release slightly anticipate the official versions of the evolving standards thus being immediately available to Customers.



UeSIM radio interface testing can be integrated with X2 and S1 simulation

www.prisma-eng.com

info@prisma-eng.com

prisma engineering Srl
Via Petrocchi, 4
20127 Milano Italy
phone: +39 02 26 11 35 07
fax: +39 02 26 11 35 97

prisma engineering France Sarl
Technoparc Espace Media
3, rue Gustave Eiffel
78306 Poissy Cedex
phone: +33 1 39 22 30 40

prisma Shanghai Trading Co. Ltd.
Far east Mansion, 1101
South pudong Rd.
Shanghai, 200122, P.R.C
phone: +86 (0) 2158 36 26 50/1



Associate member
of the GSM Association

ISO 9001:2000 Certified