

LINE SERVER UNIT v3

THE HIGHEST CAPACITY SYSTEM, A SINGLE UNIT FOR THE LARGEST TESTBEDS

The Line Server Unit v.3 (LSUv3) belongs to the last generation of high performance test equipment and is intended to support development, system test, acceptance test and production test in all telecommunication areas. LSUv3 is the latest and more powerful test

equipment among the LSU series of systems.

The LSUv3 allows to simulate, via the E1/T1, STM-1 ATM, STM-1 SDH and Ethernet interfaces, any GSM, GPRS, EDGE, UMTS and WiMAX network element.

THE BEST SOLUTION FOR LOAD & STRESS TEST OF BSC AND RNC CAN PERFORM MONITORING DURING SIMULATION

High connectivity and processing power make the LSUv3 suitable for both Functional and Load & Stress testing of complex systems. So, a single test system is used throughout the product test cycle. The LSUv3 can monitor signalling or traffic channels, simulate protocol stacks, generate traffic with packet data or speech, modify data exchanged between two real Network Elements, cause single-shot or periodical events representing either failures or abnormal conditions, for both physical interfaces and protocols.

MULTIPLE USERS CAN SHARE ONE LSUv3 AND PERFORM DIFFERENT TASKS

The multi-tasking and multi-user operation based on a Posix compliant operating system allows to use multiple applications concurrently, to handle different interfaces with proper coordination, to share the system among multiple test beds, and to integrate it into the corporate network.

NEW CESoP CUTTING EDGE TECHNOLOGY ALLOWS TDM OVER ETHERNET SUPPORT AND FURTHER EXTENDS LSUv3 CAPACITY

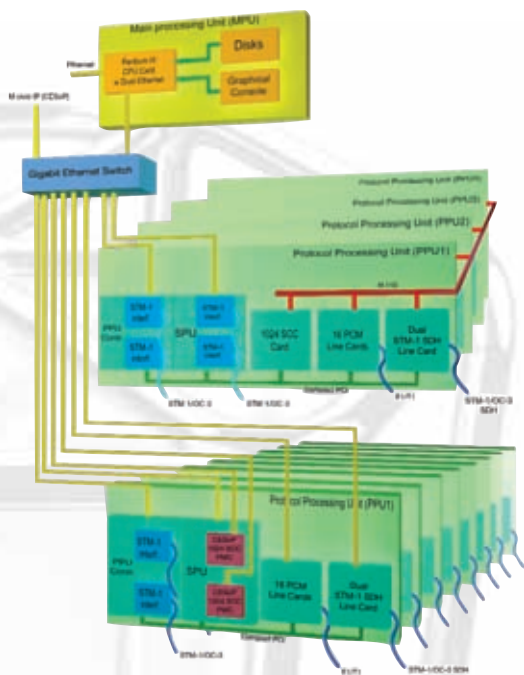
The LSUv3 embeds CESoP technology which allows extremely flexible internal architecture as well as easy interconnection towards other network elements. CESoP architecture gives an unbound virtual switch matrix by means of TDM data flow transport over IP.



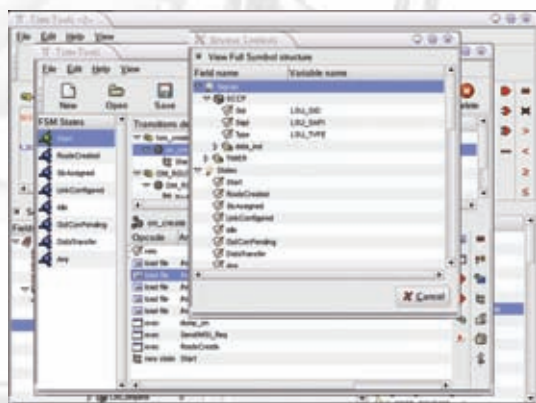
PRISMA Engineering
Telecom Testing Solutions

SYSTEM ARCHITECTURE

The modular architecture of the system offers great scalability in terms of connectivity, number of channels and processing power.



A set of switching devices allows flexible distribution of data flows to the available resources and processors. The LSUV3 is a high performance multiprocessor system based on the Compact PCI (cPCI) bus. It uses a pool of Pentium® cards to provide the needed processing power. SCC (Serial Communication Controller) cards provide specialised processing for TDM channels. E1/T1 Line cards, and STM-1/OC-3 ATM, STM-1/OC-3 SDH (channelized) and Ethernet interface cards provide connectivity. Commercial cPCI cards can be added for special applications. The system functions are split among specialised control units: the MPU manages the graphical console, the shared hard disk, the removable devices and the network interface to the corporate LAN. Up to 10 PPUs run the various protocol modules that require accurate control of the processing power and of the real time behaviour of the processor.



SIMULATION AND LOAD&STRESS USER FRIENDLY AND READY TO RUN SOLUTIONS FOR BOTH 2G AND 3G

The LSUV3 comes with a wide selection of software modules. New software modules and equipment features are continually added. The user friendly yet versatile Test Manager automates test procedures and the rich set of already running procedures and scenarios allow quick startup of new testbeds. A comprehensive range of protocols is supported, including several proprietary protocols.

PRISMA develops on request special test suites or additional features (e.g. proprietary O&M procedures) can be implemented quickly.



Typical LSUV3 users

- **Equipment manufacturers:** Development Test, Integration Test, System Test, Load&Stress, Prototyping platform
- **Network Operators:** Acceptance and Conformance Test, Field Monitoring

Distinguishing features

- One stop solution for most testing problems
- Support for all protocols and Interfaces
- Concurrent operation on multiple interfaces
- Easy integration with custom or 3rd party tools
- Great system flexibility and scalability

System Capacity

- Processors: up to 13 Pentium®
- SCC channels: up to 32768
- PCM lines: up to 128
- STM-1/OC-3 ATM Interfaces: up to 16
- STM-1 SDH I/F: up to 8
- D-Phone Units: up to 16
- IMA Groups: up to 128
- ATM TC-Layers: up to 256
- More LSUV3 units can be pooled to reach higher capacity

PRISMA Engineering Srl

via Petrocchi, 4
20127 Milano Italy
phone: +39 02 26 11 35 07
fax: +39 02 26 11 35 97

PRISMA Engineering France Sarl

Technoparc – Espace Média
3 rue Gustave Eiffel
78306 Poissy Cedex
phone : +33 1 39 22 30 40

PRISMA Shanghai Trading Co. Ltd.

Office 908, Far East Mansion, 1101
South Pudong Rd.
Shanghai, 200122, P.R.C.
phone : +86 (0) 21 58 36 26 50 / 1



Associate member of
the GSM Association

ISO 9001:2000 Certified

www.prisma-eng.com

