

Micro LINE SERVER UNIT

CONVENIENT AND VERSATILE PROTOCOL ANALYSER

The Micro Line Server Unit (μ LSU) is a special version of LSU dedicated to monitoring applications. Designed for portability, its low cost, small size and light weight make it an ideal monitoring solution both in the laboratory and on the field.



CONCURRENT MONITORING OF E1/T1, ATM AND ETHERNET LINKS

The μ LSU makes no trade-off between performances and factors like price or size. Though it is a scaled-down version of the bigger LSU units, the μ LSU guarantees high-speed monitoring on all interfaces. The μ LSU can capture and display in real time data from signalling or traffic channels showing all stacked protocols at client side.

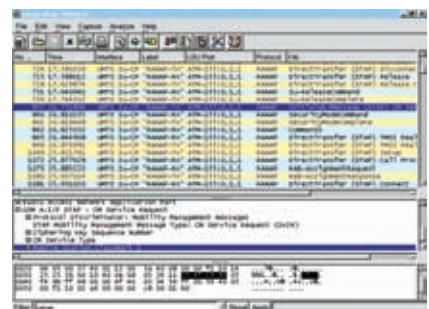
COMPACT AND LIGHTWEIGHT BUT WITH CLIENT/SERVER AND MULTI USER SUPPORT

The μ LSU operates as a monitoring server and the Protocol Analyser application (Wireshark) runs on a client PC connected through Ethernet (TCP/IP). This connection allows full remote control of the instrument by several users in parallel.

Data can be analysed in real-time and/or logged for post-processing. The client-server interface and the archiving file format are public in order to allow users to develop their own data collection applications.

USER FRIENDLY PROTOCOL ANALYSER SW AND DECODERS FOR ALL 2G/3G PROTOCOLS INCLUDED

The μ LSU is tightly integrated with the most popular open source protocol analyser: Wireshark. Wireshark is able to decode hundreds of telecom protocols and has a very friendly man machine interface. Prisma Engineering decided to support this project integrating Wireshark with the LSU product family and developing new features like decoding of proprietary protocols (implemented on demand) and programmable data analysis. Being the project open source, users are allowed to modify and extend Wireshark capabilities to support special features or proprietary protocols.

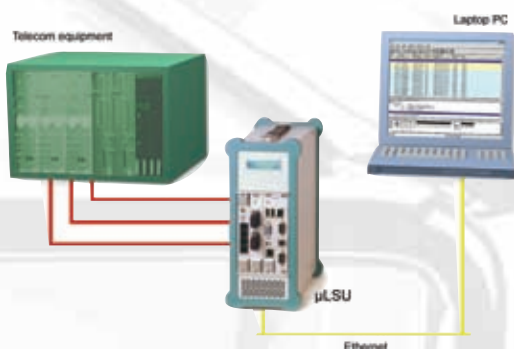
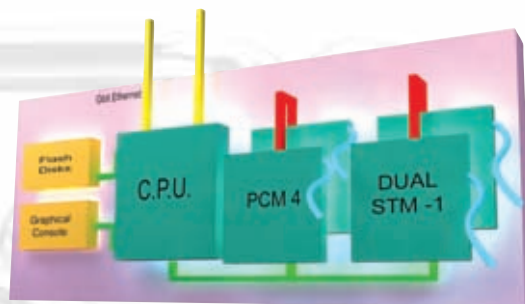


PRISMA Engineering
Telecom Testing Solutions

THE MODULAR μ LSU SYSTEM ARCHITECTURE SUPPORTS WIRE-SPEED IMA AND STM-1

The μ LSU maintains the same conceptual architecture of the higher range LSU products, based on a Compact PCI (cPCI) bus, scaled-down to a 3U form factor. The processor card manages

the communication between the line interface cards, PCM or STM-1/OC-3, collecting all the monitored data and passing them to the decoding remote application. The software is completely modular as well, based on a real-time operating system allows reliable operation for long term monitoring and high efficiency for unrivalled throughput



IDEAL FOR FIELD OPERATION AND FOR PERFORMANCE DATA MONITORING

The μ LSU can be completely controlled from any laptop PC or connected through any IP network to a remote workstation or supervisory system. Acquired data is transferred in real time to the client.

This configuration is specially suitable for long term test, KPI computation and fault tracking on live networks. Real Time and post processing operations are fully supported.

OPEN PLATFORM FOR CUSTOM APPLICATIONS

The client-server architecture with a public interface offers Service Access Points to remote applications for configuration, data collection and custom specific purposes. PRISMA Engineering is willing to design and develop special applications together with its Customers. Activities like servicing or commissioning can greatly benefit of custom applications running on such a small and powerful unit.

Typical μ LSU users

- **Equipment manufacturers:** Interface monitoring in development / integration phases, commissioning and service.
- **Network Operators:** Field Monitoring, QoS verification.
- **Installation & Commissioning Companies:** Connection verification, Physical link monitoring.

Distinguishing features

- Full coverage of GSM/GPRS/EDGE and UMTS/WCDMA protocols
- Bi-directional monitoring of up to 2 STM-1/OC-3 and 4 E1/T1 wire-speed
- Full synchronisation and time-stamping of data logged on all interfaces
- Full featured monitoring application
- Programmable statistic data collection
- Synchronised monitoring from multiple μ LSU units
- Built in multi-user support

Summary of Features

- Processors: Pentium® M
- SCC: up to 256
- PCM: up to 4
- STM-1/OC-3 Interfaces: up to 2
- IMA Groups: up to 16
- ATM TC-Layers: up to 4

PRISMA Engineering Srl

via Petrocchi, 4
20127 Milano Italy
phone:+39 02 26 11 35 07
fax: +39 02 26 11 35 97

PRISMA Engineering France Sarl

Technoparc – Espace Média
3 rue Gustave Eiffel
78306 Poissy Cedex
phone : +33 1 39 22 30 40

PRISMA Shanghai Trading Co. Ltd.

Office 908, Far East Mansion, 1101 South Pudong Rd.
Shanghai, 200122, P.R.C.
phone : +86 (0) 21 58 36 26 50 / 1



Associate member of
the GSM Association

ISO 9001:2000 Certified

www.prisma-eng.com

