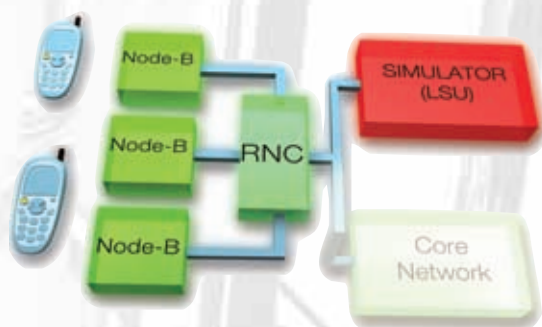


# LINE SERVER UNIT v3 Compact

## VERSATILE DEVICE, FOR LAB AND FIELD, IDEAL FOR 3G TEST APPLICATIONS

The Line Server Unit v3 Compact (LSUV3C) is a scaled-down version of the LSUV3 Standard. Thanks to its small size and rugged chassis, it can be easily moved around in laboratories and on the field.

LSUV3 Compact can be connected, via the PCM, STM-1 ATM, STM-1 SDH and Gigabit Ethernet interfaces, to any network element in GSM, GPRS, EDGE, UMTS and WIMAX networks.



LSUV3C based UMTS Core Network Simulator

## CAN BE USED FOR SIMULATION OF 3G CORE NETWORK OR AS A MULTI USER MONITORING SERVER

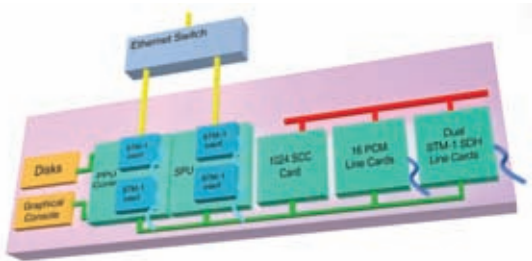
The LSUV3 Compact can monitor signalling or traffic channels, simulate protocol stacks, generate traffic with packet data or speech, modify data exchanged between two real Network Elements, cause single-shot or periodical events representing either failures or abnormal conditions, both for physical interfaces and protocols. The LSUV3 Compact is specially suited for small to medium simulations and mass monitoring.

### Sample applications:

- 3G Core Network Emulator
- 3G Radio Access Network Simulator (including a population of mobiles)
- 2G/3G Charging verification
- Mass monitoring (up to 32 E1/T1 lines or 8 STM-1 lines)



**PRISMA Engineering**  
Telecom Testing Solutions



## THE POWERFUL AND FUTURE PROOF LSUV3C SYSTEM ARCHITECTURE SUPPORTS ANY INTERFACE AT WIRE-SPEED

The LSUV3C is based on a 4 to 6 slots Compact PCI (cPCI) bus. It uses up to 3 Pentium® cards to provide the needed

processing power. One SCC (Serial Communication Controller) card provides specialised processing for TDM channels. E1/T1 Line cards, STM-1 ATM, STM-1 SDH and Ethernet interface cards provide connectivity. Commercial cPCI cards can be added for special applications. The PPU Controller manages the graphical console, the shared hard disk and the network interface to the corporate LAN. In addition, it runs the various protocol modules, optionally sharing the processing load with SPUs.

## HIGH NUMBER OF STM-1 LINES SUPPORTED, BOTH ATM AND CHANNELISED SDH

The LSUV3C can be equipped with up to 8 STM-1/OC-3 ATM interfaces. Both optical and electrical (coax) interfaces are available, making the LSUV3C a convenient solution both for laboratories and field environments.

STM-1 SDH (channelised) is supported as well, data are processed as those coming from E1/T1 lines. Two STM-1/OC-3 connections are provided by each card. ATM over E1/T1 with handling of IMA groups is also provided.

## LOWEST PRICE PER LINE MONITORING SOLUTION WITH OUTSTANDING PERFORMANCES

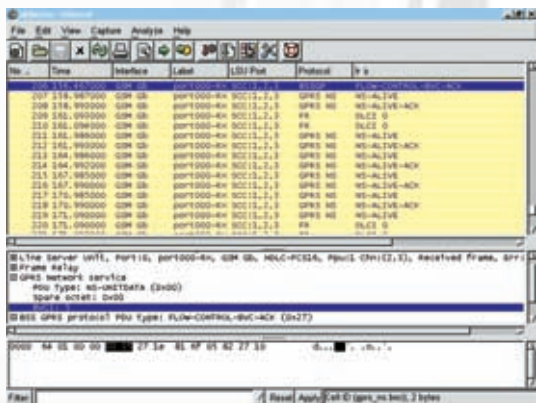
The LSUV3C high connectivity and processing power makes it the ideal mass-monitoring tool for complex networks like the Packet-Switched GPRS/EDGE and UMTS networks. Even the monitoring of concatenated frames over a high number of channels is not a problem. Compatibility with the hugely popular Wireshark(\*) tool offers maximum user friendliness.



Dual STM-1/OC-3 SDH card



Dual STM-1/OC-3 ATM PMC



User Friendly Wireshark protocol analyser

(\*) Wireshark (formerly named Ethereal) is an open source network protocol analyzer for Unix and Windows, see [www.wireshark.org](http://www.wireshark.org)

## Typical LSUV3C users

- **Equipment manufacturers:** Development Test, Integration Test, System Test, Prototyping platform
- **Network Operators:** Acceptance and Conformance Test, Field Monitoring

## Distinguishing features

- Support for of all major protocols and Interfaces
- Concurrent operation on multiple interfaces
- Easy integration with custom or 3<sup>rd</sup> party tools

## System Capacity

- Processors: up to 3 Pentium®
- SCC channels: up to 4096
- PCM lines: up to 32
- STM-1/OC-3 ATM I/F: up to 8
- STM-1 SDH I/F: up to 2
- D-Phone Units: up to 4
- IMA Groups: up to 16
- ATM TC-Layers: up to 32

## PRISMA Engineering Srl

via Petrocchi, 4  
20127 Milano Italy  
phone:+39 02 26 11 35 07  
fax: +39 02 26 11 35 97

## PRISMA Engineering France Sarl

Technoparc – Espace Média  
3 rue Gustave Eiffel  
78306 Poissy Cedex  
phone : +33 1 39 22 30 40

## PRISMA Shanghai Trading Co. Ltd.

Office 908, Far East Mansion, 1101  
South Pudong Rd.  
Shanghai, 200122, P.R.C.  
phone : +86 (0) 21 58 36 26 50 / 1

